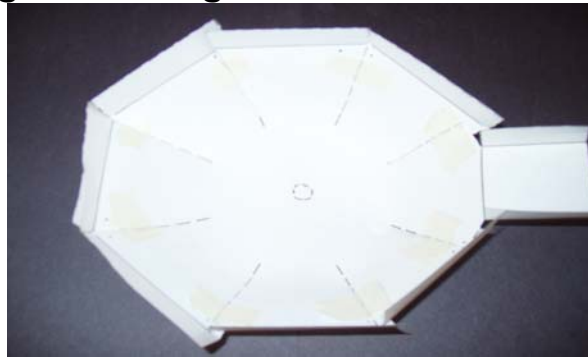


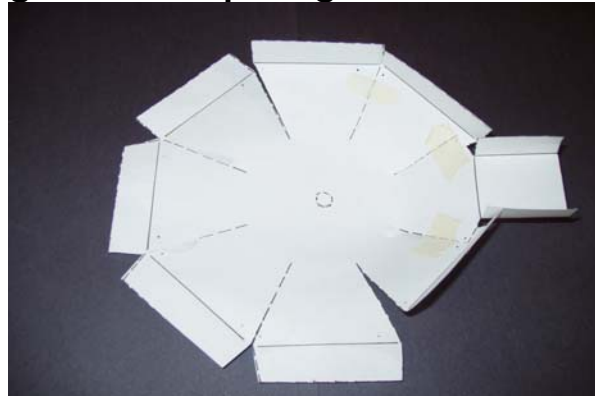
Directions to Constructing Pawnee Earthlodge,

Model drawn by Warren Pratt Jr.

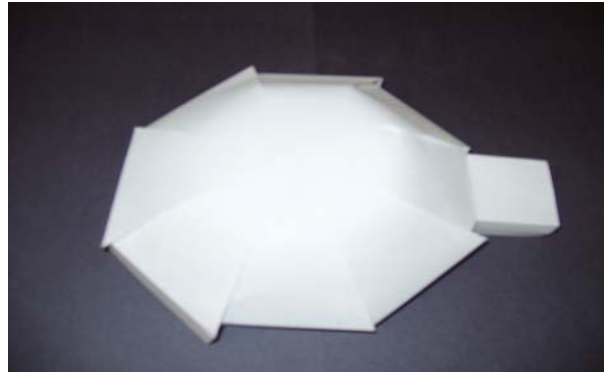
1. Cut out along dotted edges



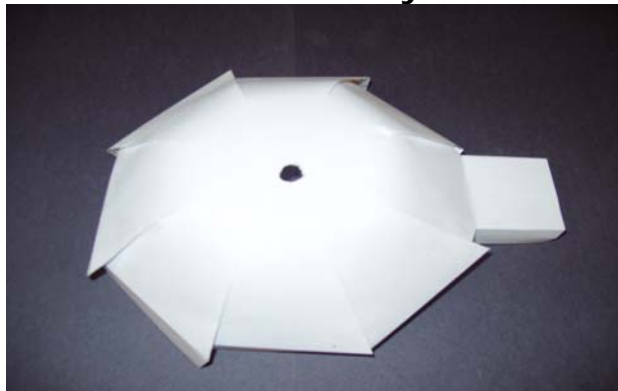
2. Fold on straight lines, tape together



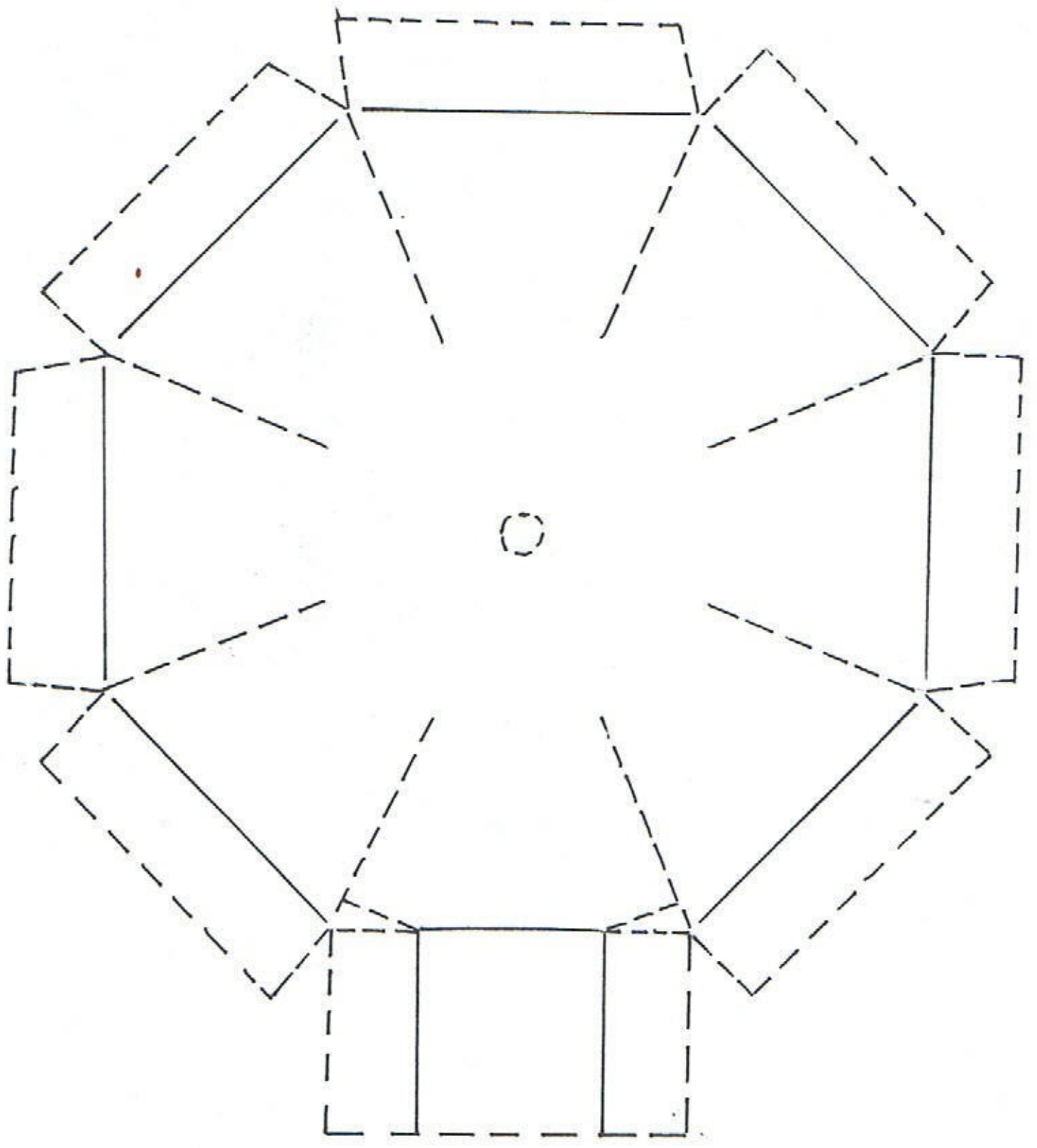
3. Match up sides, form dome

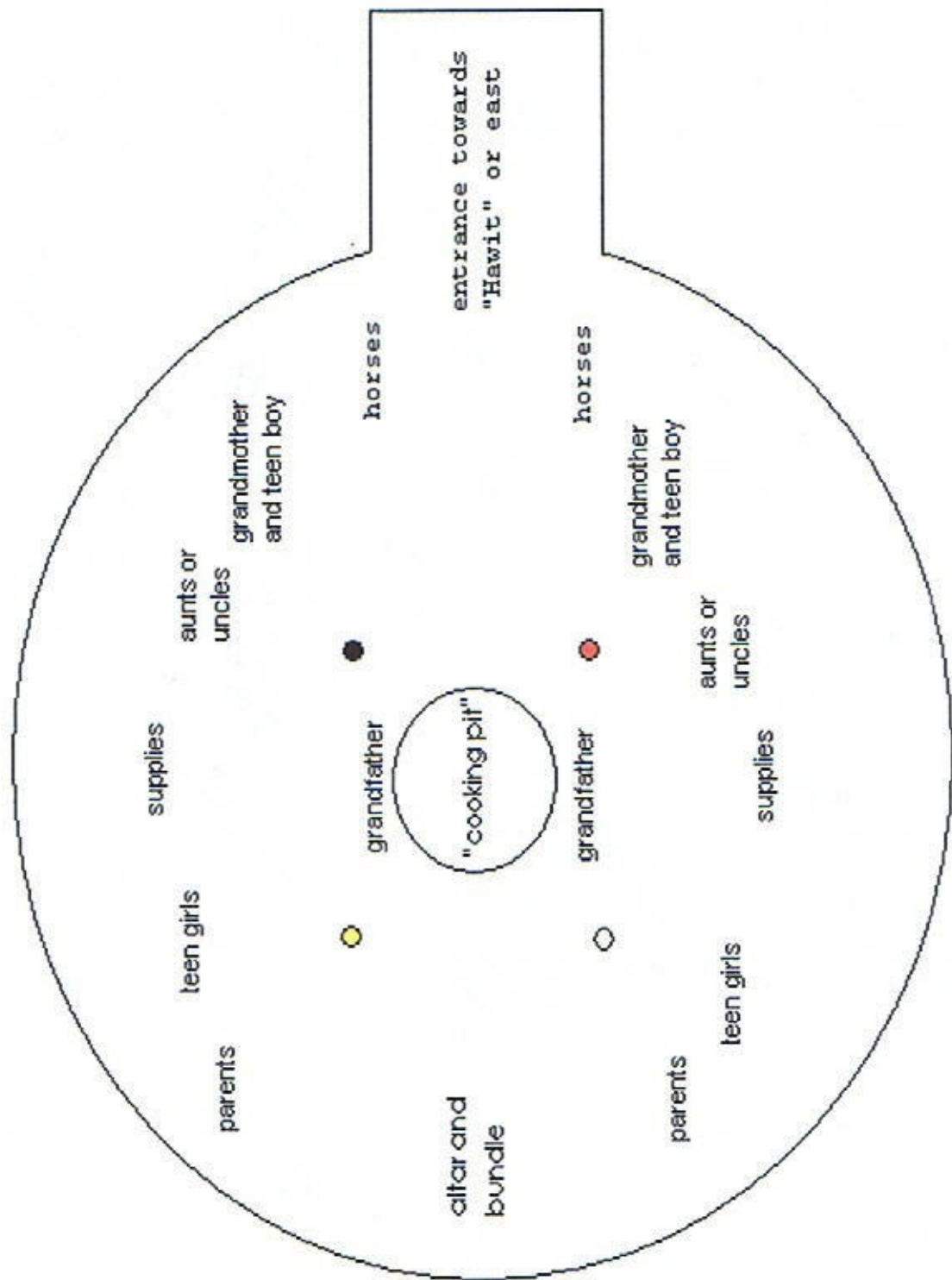


4. Make hole for Ta<awahut to see you!



Place completed lodge over the exterior layout and you're done!
Use colored paper if you want to or mount it to a board.





Pawnee Earthlodge interior